



Introduction

Bethania Lutheran School believes that children learn best in a secure, happy and positive environment in which individuals are respected and within which personal responsibility and self discipline can be developed. The student 'Code of Conduct' has been designed to assist children in developing a sense of responsibility and an awareness of the need to care for and value themselves and others. The 'Code of Conduct' reflects a student's rights and responsibilities and is supported by the rewards program and consequences for inappropriate behaviour.

The need to implement strategies to modify inappropriate behaviour is reduced by increasing each child's self-esteem and reinforcing desirable behaviour. Through the Social and Emotional programmes of the school we work towards creating a harmonious environment where all can feel valued, safe and happy. The Behaviour Education programmes of the school are closely linked with Restorative Practices, Circle Time, Play is the Way and Values Education.

Contents

Code of Conduct	pg. 2
Rights and responsibilities	pg. 3
School expectations of students	pg. 5
Classroom rules	pg. 6
Procedures for managing playground behaviour	pg. 6
Behaviour Education processes	pg. 7

Code of Conduct

It is important that:

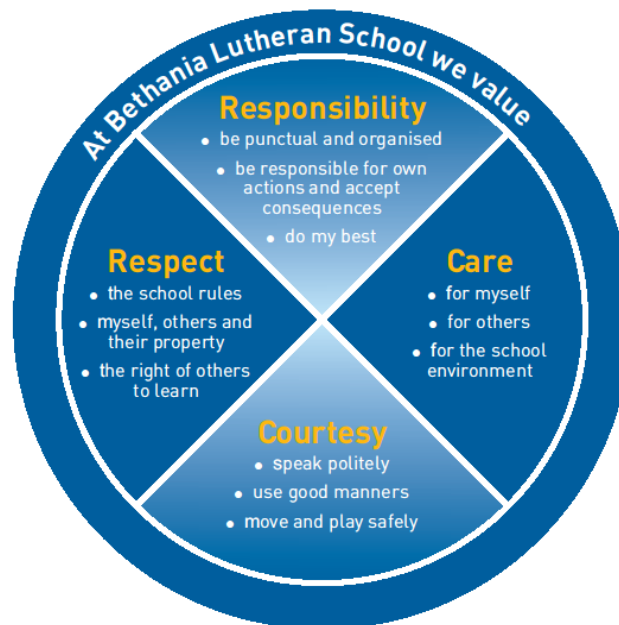
- everyone in the school community knows and understands the 'Code of Conduct'
- positive behaviour is recognized
- consequences for unacceptable behaviour are applied fairly, firmly and consistently.

At Bethania Lutheran School student conduct is at all times the shared responsibility of parents/guardians, students and staff. The modeling of appropriate behaviour, by both parents/guardians and staff, is necessary to actively encourage student behaviour that highlights:

- care and respect for themselves
- consideration of the rights of others
- thoughtfulness and courtesy
- responsibility for one's own actions and acceptance of consequences
- consideration of the property of others
- a sense of ownership and pride in their school



Code of Conduct



strong in **values**
strength in **character**
living hope

Rights and Responsibilities

At Bethania Lutheran School we believe that all members of our community work together for the development of our students. We each have a part to play in nurturing the God given gifts of every individual child. The following rights and responsibilities outline how we work together toward this goal.

Student	Rights	Responsibilities
	All students have a right to:	All students are responsible for:
	a positive educational environment that creates the maximum opportunity to learn.	allowing others to achieve their best and learn without interruption. I need to participate to progress.
	work and play in a safe, secure, friendly environment where I am valued for my individual qualities.	behaving in a way that protects the safety and well-being of others. Treat others as I would like them to treat me
	be treated with respect and courtesy and feel that my ideas are valued.	having reasons for the things I say and do, including using good manners, being kind and considerate to others and valuing others' opinions.
	know what is acceptable behaviour and the consequences for unacceptable behaviour.	being responsible for my own actions and accepting the consequences of my behaviour
	participate in lessons that meet my needs, giving me opportunities to grow my God-given talents.	pursuing my personal best and working cooperatively and courteously with members of the school community
be challenged and assisted to develop self-control, responsibility and independence.	being truthful and honest. Being strong enough to be sensible.	

Parent/Carer	Rights	Responsibilities
	All parent/carers have a right to:	All parent/carers are responsible for:
	be treated with courtesy, respect and listened to.	treating others in the school community as I would like to be treated, which includes courtesy, respect and listening to others.
	be provided with feedback regarding my child's behaviour and progress.	openly and honestly communicating with the school about changes to my child's circumstances.
		supporting the school in its implementation of expectations, rewards and consequences.
	encouraging children to be responsible for their own actions and accept the consequences for unacceptable behaviour.	
be involved in my child's learning	working together with school staff to help support my child's development	
	maintaining a positive attitude towards staff in front of my child.	
have a sound educational programme provided for my child.	supporting the school in its efforts to meet the educational needs of my child	
	encouraging my children to 'do their best'.	

Staff	Rights	Responsibilities
	All staff have a right to:	All staff are responsible for:
	be treated with courtesy, respect and listened to.	treating others in the school community as I would like to be treated, which includes courtesy, respect and listening to others.
	work in an environment which respects the needs and wellbeing of others	encouraging and supporting students to become responsible and courageous learners.
		creating a positive educational environment that maximizes the opportunities for all students to learn.
work in classrooms where optimal learning can occur	regularly reinforcing and clarifying school expectations, consequences, rights and responsibilities	
	implementing a rewards program and the consequences for inappropriate behaviour fairly, firmly and consistently.	
	planning and implementing innovative learning that meets individual students' needs and motivates students to participate in learning activities.	

School Expectations of Students

Students will show:

Care

- by looking after themselves and others.
- by trying to resolve problems in a fair, sensible and calm manner.
- by looking after the school environment.

Respect

- by following the school expectations and rules.
- by caring for their own belongings and respecting the property of the school and others.
- by allowing others to learn.

Courtesy

- by speaking and behaving in a kind, respectful and courteous manner.
- by playing and moving around the school safely, keeping hands, feet and objects to themselves.

Responsibility

- by wearing the correct school uniform, including their hat while playing.
- by being responsible for their own behaviour
- by accepting the consequences of unacceptable behaviour.
- by being punctual and organised.
- by doing their best.

Classroom Rules

Each class is responsible for discussing and developing a set of rules. These will enable each member of the class to learn in an environment which is supportive and free from disruption. Consequences are applied in an environment where opportunities for positive choices and consequences prevail.

Procedures for Managing Playground Behaviour

In the interests of student safety Bethania Lutheran School has specific playground rules. These playground rules include;

- Students must walk on concrete at all times
- Certain areas, from time to time, will be deemed 'Out Of Bounds', no student will enter these areas.
- Playground equipment must be used in the manner for which it was designed.
- A hat must always be worn outside
- Age restricted areas must be adhered to
- Students are not to play in areas not supervised by staff
- Toilets are not areas to play or gather in
- Respect for others must be shown at all times
- Games which involve rough play are not acceptable

Staff on playground duty are responsible for the safety and acceptable behaviour of students in the areas they supervise.

Staff should be punctual and carry their resource clip board and walky talky with them. Credit slips may be issued to children displaying positive behaviour e.g. caring attitude, willingness to help, responsible behaviour.

For minor breaches of the school rules, some of the following strategies may be used:

- call the student aside and motivate him or her towards acceptable behaviour.
- sit the student out of the play area for a few minutes.
- have the student walk with the teacher.

Demerit slips should be issued for more serious offences or repetitive misbehaviour. The behaviour education process must then be followed according to the flowchart at the end of this document, including restorative practices procedures, if appropriate.

All issued credit and demerit slips are to be handed (or sent) to the office at the end of duty. These slips will be placed in class trays by office staff.

Behaviour Education Processes

Bethania Lutheran School behaviour education processes can be summarised in the following diagram. Please note that this flowchart is not a substitute for normal classroom management strategies such as reward charts, behaviour contracts, time out, lunchtime detentions etc.

BLS Behaviour Education Flowchart

Instructions:

1. Identify the level of behaviour
2. Answer the initial question
3. Follow the arrows until desired behaviour is achieved

Note: This flowchart is not a substitute for normal classroom management strategies such as reward charts, behaviour contracts, time out, lunchtime detentions etc.

